



📍 Yalıkavak

Stone House and Outbuildings on an 815 m² Plot in Yalıkavak Burun Köyü

<https://evbodrum.com>



Room
2



Bathroom
3



Living Area
320 m²



Land Area
815 m²

Located in the Burun Köyü area of Yalıkavak, this stone property sits on an 815 m² plot and was formerly operated as a restaurant. It is suitable for both residential and commercial use. The main house offers approximately 200 m² of living space, with a total of around 300 m² enclosed area including outbuildings. The two-storey main structure features 2 living rooms and 2 bedrooms. The mature garden offers potential for open-space arrangements or landscaping. The property requires renovation. With its convenient location close to Yalıkavak center, it can be adapted as a private residence or transformed into a boutique business. [...]



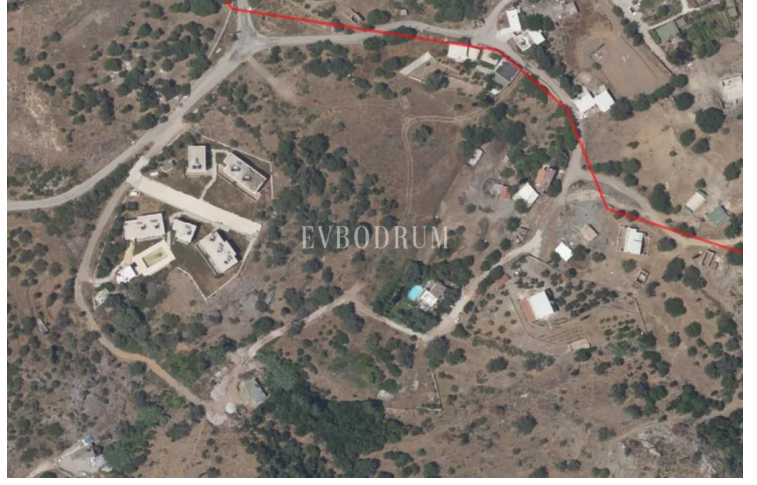
+90 252 358 72 72

info@evbodrum.com

Konacık Neighborhood, Atatürk Boulevard

Balkanoğlu Business Center F1, Bodrum

Mugla, Türkiye



+90 252 358 72 72

info@evbodrum.com

Konacık Neighborhood, Atatürk Boulevard

Balkanoğlu Business Center F1, Bodrum

Mugla, Türkiye