



📍 Yalıkavak

## Investment Land of 13,055 m<sup>2</sup> in Bodrum Geriş

<https://evbodrum.com>



Land Area  
**13055 m<sup>2</sup>**

Located in the Sarnıçdağı area of Geriş Mahallesi, Bodrum, this 13,054.98 m<sup>2</sup> parcel of land presents an exceptional opportunity for investors. Set amidst nature in a peaceful and serene environment, the property's expansive size offers strong potential for both agricultural use and future zoning developments. Thanks to its elevated position, the plot benefits from panoramic views and stands out for its location. The Geriş area is steadily evolving, surrounded by luxury villa projects and rising real estate values, making it a highly attractive investment zone. Province: Muğla District: Bodrum Neighborhood/Village: Geriş Area: Sarnıçdağı Block: 162 Parcel: 3 Land Size: 13,054.98 m<sup>2</sup> Type: Agricultural Land [...]



+90 252 358 72 72

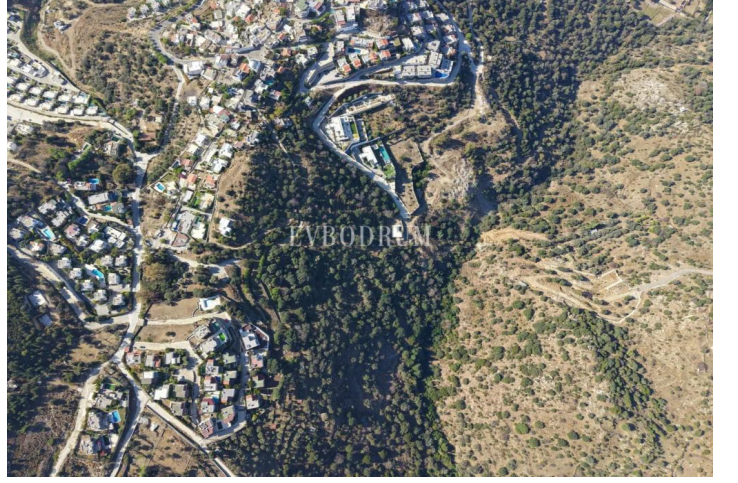
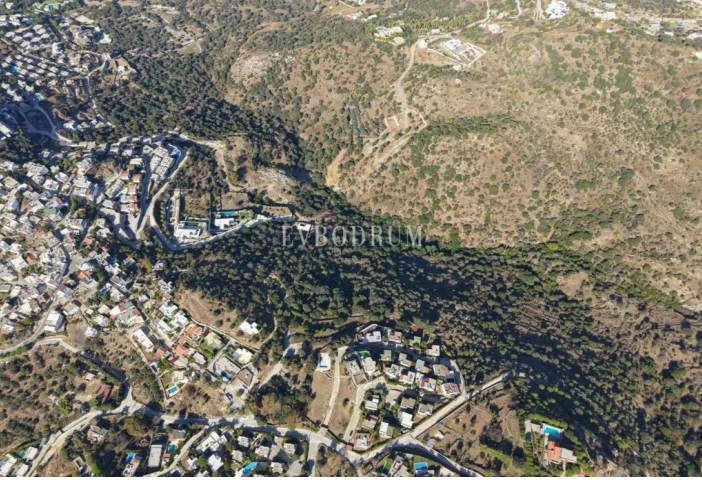
[info@evbodrum.com](mailto:info@evbodrum.com)

Konacık Neighborhood, Atatürk Boulevard

Balkanoğlu Business Center F1, Bodrum

Muğla, Türkiye





**+90 252 358 72 72**

[info@evbodrum.com](mailto:info@evbodrum.com)

Konacık Neighborhood, Atatürk Boulevard

Balkanoğlu Business Center F1, Bodrum

Mugla, Türkiye